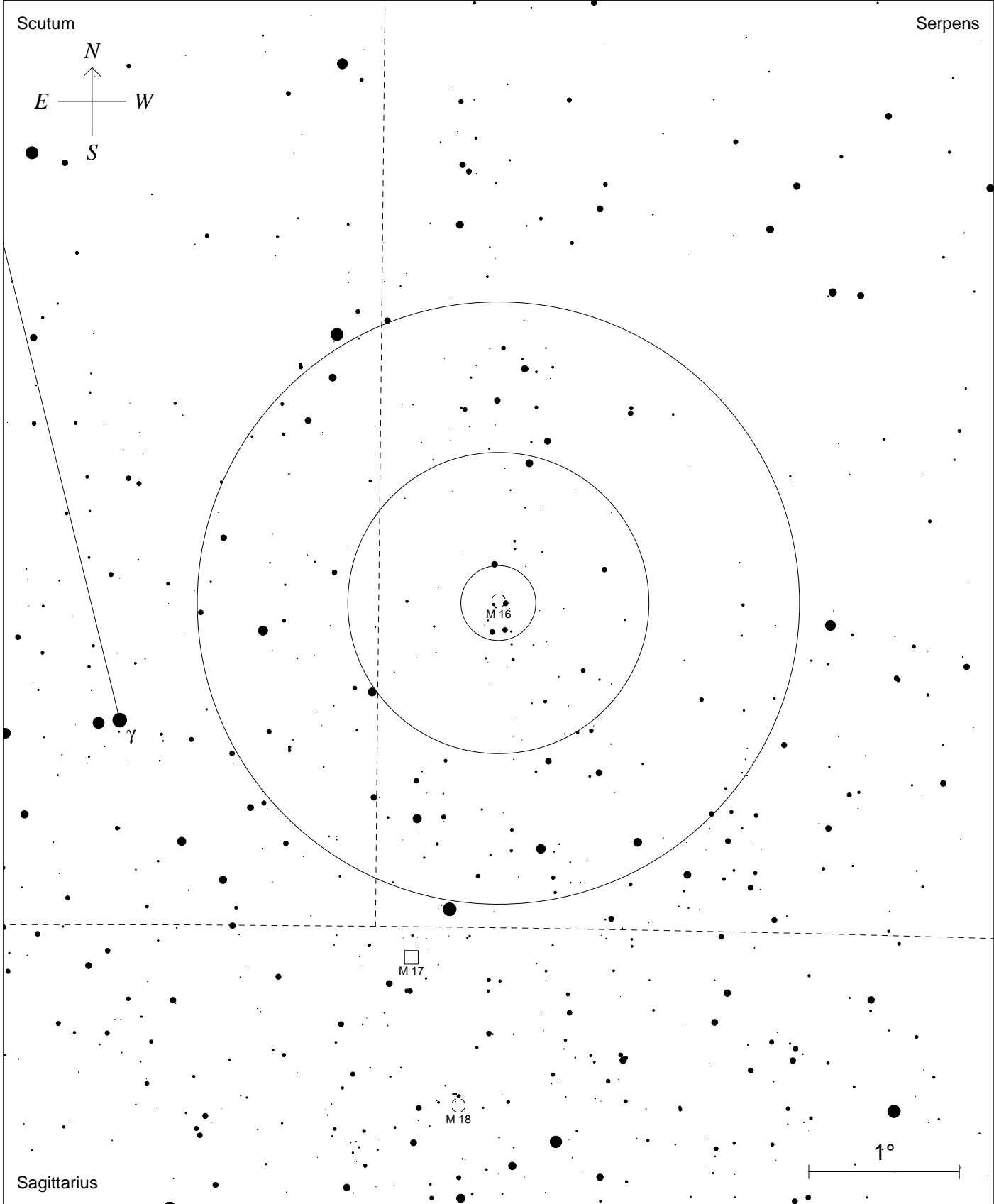


M16

NGC6611 Ser ammasso aperto m6.4 7.0'



| | | |
|--|---|--|
| <p>STARS</p> <ul style="list-style-type: none"> ● <5 >10 ● 6 ● 7 ● 8 ● 9 | <p>SYMBOLS</p> <ul style="list-style-type: none"> ● Multiple star ○ Variable star ☄ Comet ○ Galaxy □ Bright nebula ◻ Dark nebula ⊕ Globular cluster ○ Open cluster ⊙ Planetary nebula ⊗ Quasar △ Radio source × X-ray source ○ Other object | <p><i>Mapa elaborata con SkymapPro10 Allegato al sito di Astronomia Binoculare dell'Apprendista Astrofilo UAI - Unione Astrofili Italiani Commissione Divulgazione www.uai.it</i></p> |
|--|---|--|