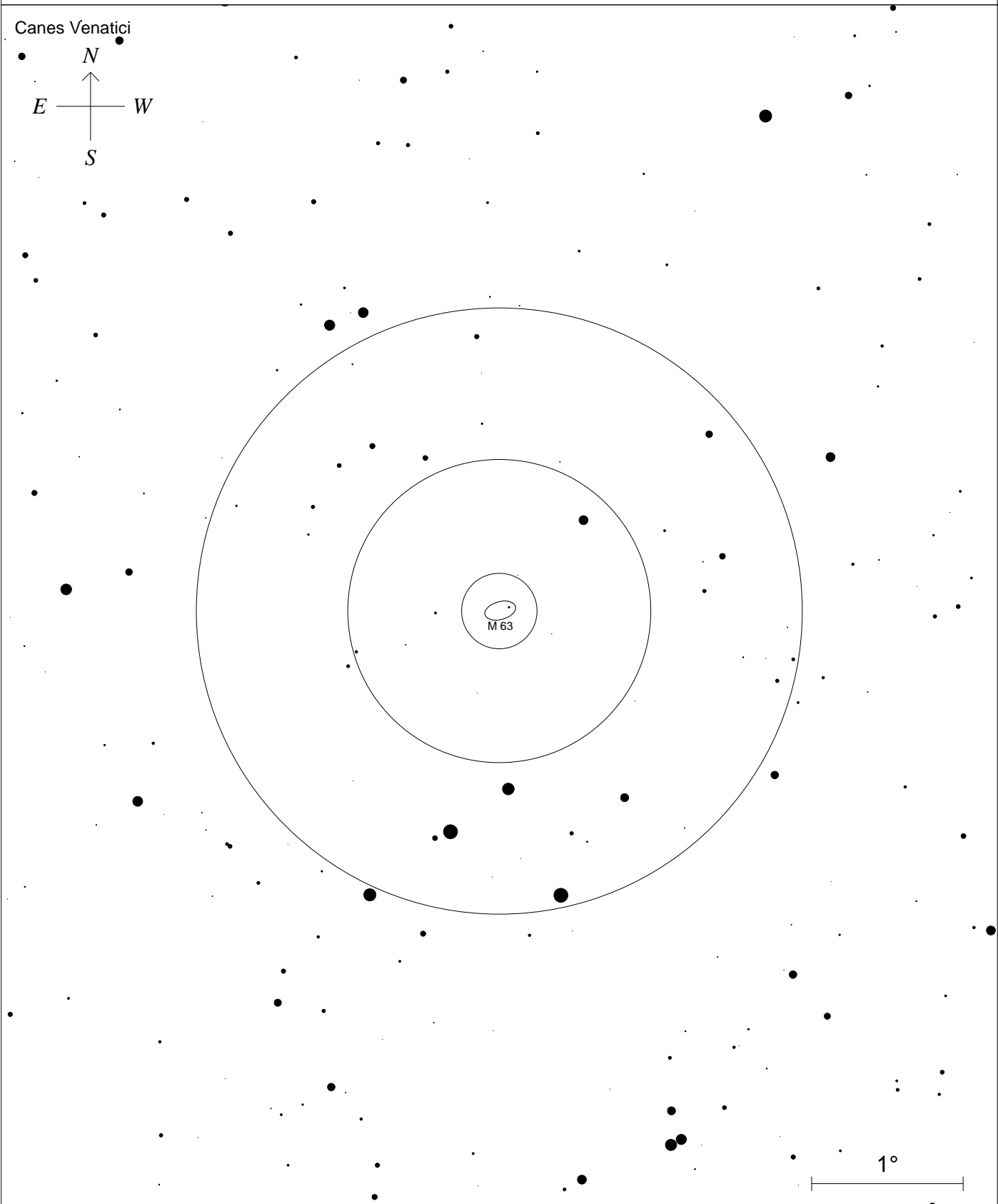
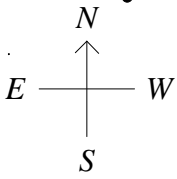


M63

NGC5055 CVn galassia spirale m8.6 10x6'

Canes Venatici



STARS

- <5 >10
- 6
- 7
- 8
- 9

SYMBOLS

- | | | |
|-----------------|--------------------|----------------|
| ● Multiple star | ◻ Dark nebula | △ Radio source |
| ○ Variable star | ⊕ Globular cluster | × X-ray source |
| ☄ Comet | ○ Open cluster | ○ Other object |
| ○ Galaxy | ⊙ Planetary nebula | |
| ◻ Bright nebula | ⊞ Quasar | |

*Mapa elaborata con SkymapPro10
 Allegato al sito di Astronomia
 Binoculare dell'Apprendista Astrofilo
 UAI - Unione Astrofili Italiani
 Commissione Divulgazione
 www.uai.it*